

## **GALVESTON COLLEGE**

### **Goals for Student Achievement**

1. Student Completion – 100 percent of the students receive a performance grade 90 percent of the time. (Performance Grades = A, B, C, D, or F, CR\*, or NC\*). \*Dev.Ed. (See “Four-Year Success Completion Rates”)
2. Student Success – 100 percent of the students achieve a success grade 70 percent of the time. (Success Grades = A, B, C, or CR\*). \*Dev.Ed. (See “Four-Year Success Completion Rates”)
3. Student Retention – 70 percent of students are retained from fall-to-spring, and 40 percent of students are retained fall-to-fall. (See “Retention Adjusted for Graduates FA11-FA12 TO SP18”)
4. The rolling three average of student success points has increased by 2 percent during the time from 2012-2017. (Student Success Points is a point system that awards or accumulates points on an annual basis for student completion of developmental studies, student completion of gateway courses, student completion of 15 semester hours, student completion of 30 semester hours, graduation, and transfer.) (See “Success Points Three Year Rolling Average.”)
5. Job Placement / Pursuing Additional Education – 85 percent of graduates will be employed following graduation and/or pursuing additional education. (See “StudentsEmployedEnrolled”)
6. Technical Program – Critical Success Measures
  - a. Each technical program will generate at least 5 graduates per year or 25 graduates over 5 years.
  - b. Each technical program will generate an 85 percent success rate for its graduates with success being defined as employed following graduation, pursuing additional education following graduation, or both.
  - c. Ninety percent of students graduating from a technical program should pass their licensure requirements within one year following graduation. (See “Technical Programs-Critical Measures.”; Also, SEE “CBM116 Technical Program Placement Rates” & “Technical Program Licensure Pass Rates.”)

## SACS Federal Requirement 8.1

### Course Success/Completion:

#### Four-Year Success & Completion Rates

Year	Attempted	Success		Completion	
FY2015	14,022	10,984	78.3%	12,744	90.9%
FY2016	13,814	11,184	81.0%	12,675	91.8%
FY2017	13,832	10,899	78.8%	12,679	91.7%
FY2018	14,356	11,427	79.6%	13,102	91.3%
	<b>56,024</b>	<b>44,494</b>	<b>79.4%</b>	<b>51,200</b>	<b>91.4%</b>

**Institutional Goal:**                      **Definitions:**

70% Success Rate

Success Rate=Grades of C or better, plus CD (Dev. Ed.)

90% Completion Rate

Completion Rate=Grades of A to F, plus CR & NC (Dev. Ed.)

Revised 10/2018

## SACS Federal Requirement 8.1

### Retention:

#### Retention Rates Adjusted for Graduates: Total Enrollment

	Fall Enrollment	Graduates	Returned Fall	Percentage
<b>Fall-to-Fall</b>				
FA11-FA12	2,222	411	890	49.1%
FA12-FA13	2,197	479	845	49.2%
FA13-FA14	2,131	424	793	46.5%
FA14-FA15	2,048	423	862	53.0%
FA15-FA16	2,071	473	862	55.2%
FA16-FA17	2,201	488	910	53.1%
FA17-FA18	2,208	534	946	56.5%
<b>Fall-to-Spring</b>				
FA12-SP13	2,197	--	1,646	74.9%
FA13-SP14	2,131	--	1,561	73.3%
FA14-SP15	2,048	--	1,479	72.2%
FA15-SP16	2,071	--	1,505	72.7%
FA16-SP17	2,201	--	1,567	71.2%
FA17-SP18	2,208	--	1,635	74.1%

#### Institutional Goal:

Fall-to-Fall Retention: 40%

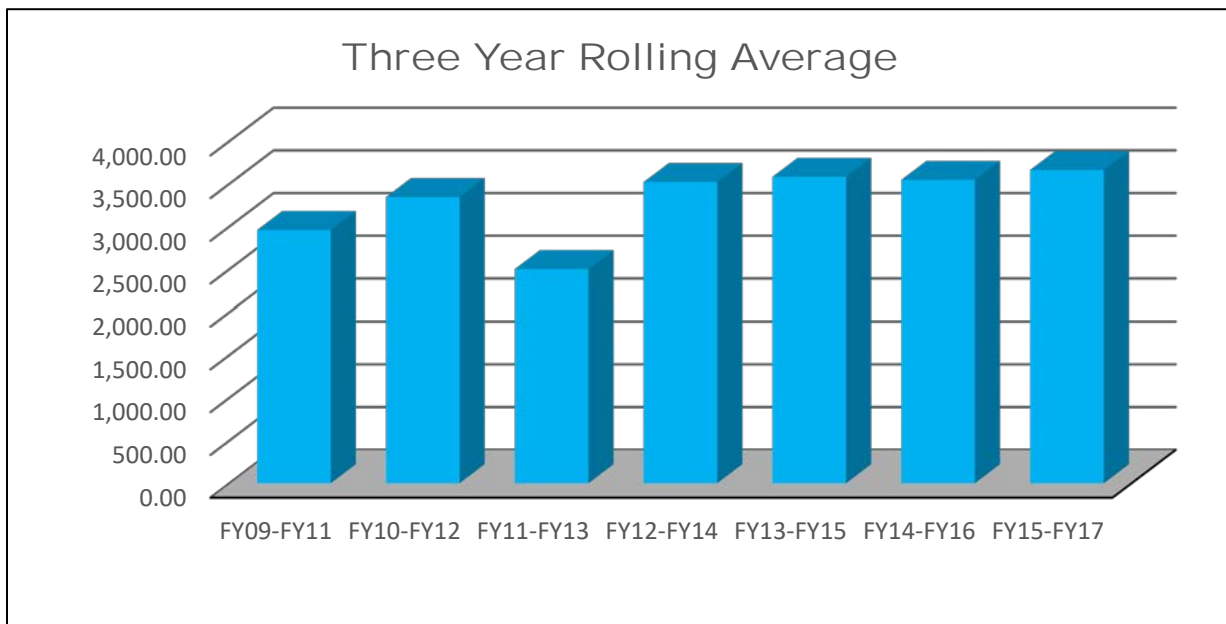
Fall-to-Spring Retention: 70%

*Revised 10/2018*

## SACS Core Requirement 8.1

### GALVESTON COLLEGE STUDENT SUCCESS POINTS Three-Year Rolling Average

FY09-FY11	FY10-FY12	FY11-FY13	FY12-FY14	FY13-FY15	FY14-FY16	FY15-FY17
2,957.50	3,343.83	2,499.77	3,519.10	3,580.20	3,544.67	3,660.33

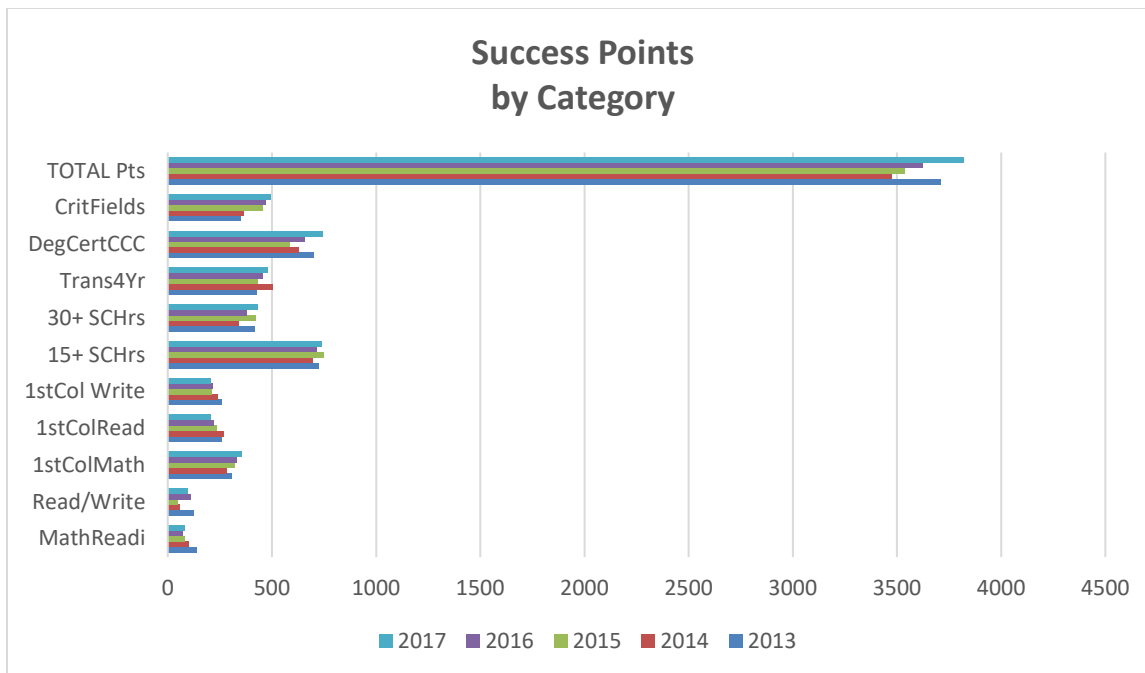


## Breakdown of Galveston College Success Points (Weighted)

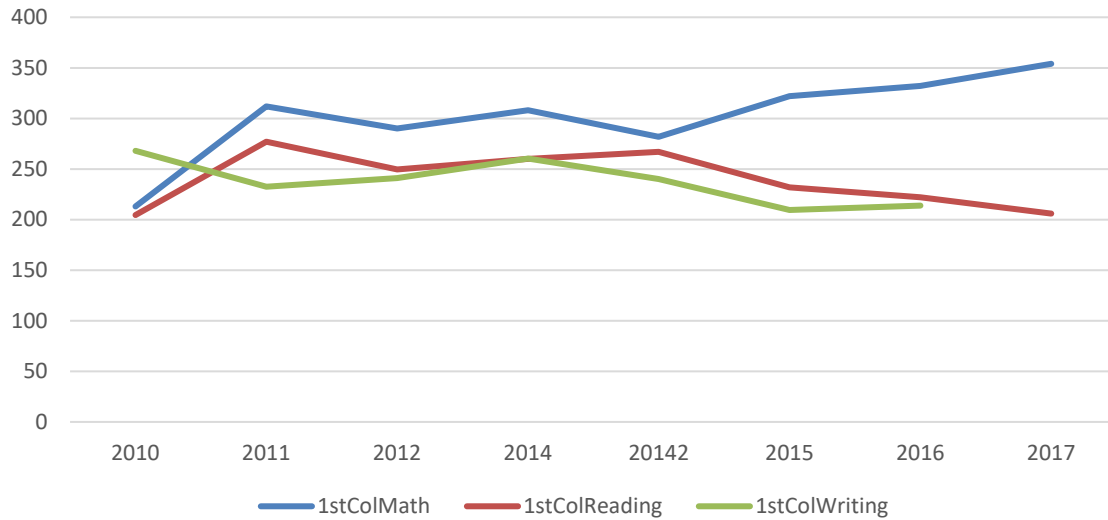
Category:	2014	2015	2016	2017
Math Readiness	99	82	70	80
Read Readiness	27	25	53	47
Write Readiness	31	24	55	47
First College-Level Math	282	322	332	354
First College-Level Reading	267	232	222	206
First College-Level Writing	240	210	214	207
Completion of 15 Sem. Hrs.	694	747	716	736
Completion of 30 Sem. Hrs.	339	420	380	430
Transfer to 4-yr Inst.	502	434	456	480
Compl. of Degree/Cert./CCC	628	584	658	742
Degrees/Cert in Critical Fields	365	457	470	493
<b>Total Success Points</b>	<b>3,474</b>	<b>3,535</b>	<b>3,625</b>	<b>3,821</b>

Source: THECB Accountability Report

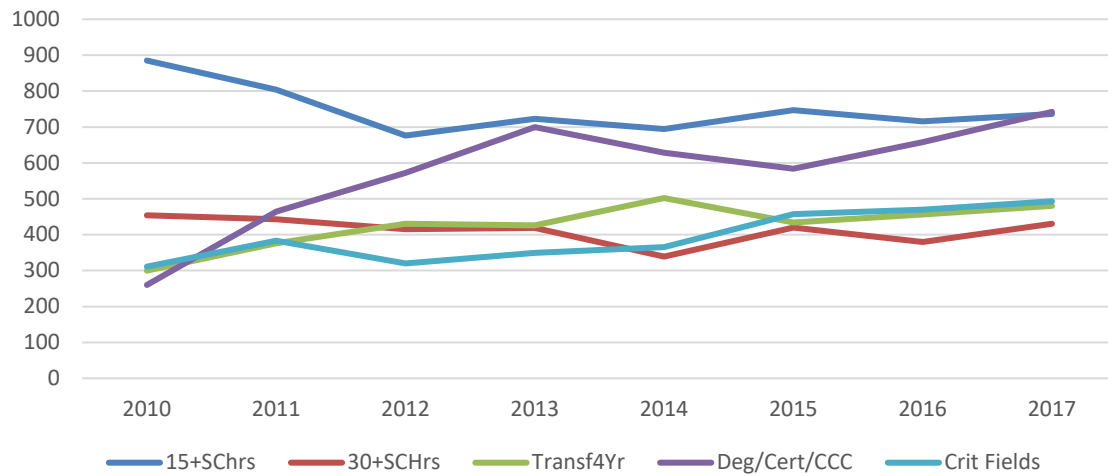
Revised 06/2018



### Success Points for First-Time College Courses



### Student Success Points THECB Data Categories



# SACS Core Requirement 8.1

IE and Research

## Accountability Measure -- Success (Contextual Measures)

### Students Employed/Enrolled in a Texas Sr. Institution within 1-Year of Graduation

	FY 2010		FY 2011		FY 2012		FY 2013		FY 2014		Point Change FY 2010 to FY 2014
<b>Academic</b>	<b>91</b>		<b>104</b>		<b>140</b>		<b>168</b>		<b>145</b>		
Employed Only	34	37.4%	27	26.0%	59	42.1%	81	48.2%	55	37.9%	0.6%
Employed & Enrolled (in Sr. Institutions)	20	22.0%	35	33.7%	35	25.0%	40	23.8%	45	31.0%	9.1%
Enrolled Only (in Sr. Institutions)	23	25.3%	21	20.2%	23	16.4%	21	12.5%	24	16.6%	-8.7%
Enrolled Only (in Community Colleges)	7	7.7%	12	11.5%	11	7.9%	6	3.6%	6	4.1%	-3.6%
Not Found	7	7.7%	9	8.7%	12	8.6%	20	11.9%	15	10.3%	2.7%
<b>Technical</b>	<b>227</b>		<b>293</b>		<b>257</b>		<b>278</b>		<b>272</b>		
Employed Only	195	85.9%	234	79.9%	213	82.9%	241	86.7%	224	82.4%	-3.6%
Employed & Enrolled (in Sr. Institutions)	5	2.2%	8	2.7%	5	1.9%	11	4.0%	4	1.5%	-0.7%
Enrolled Only (in Sr. Institutions)	2	0.9%	3	1.0%	2	0.8%	1	0.4%	0	0.0%	-0.9%
Enrolled Only (in Community Colleges)	14	6.2%	18	6.1%	16	6.2%	23	8.3%	20	7.4%	1.2%
Not Found	11	4.8%	30	10.2%	21	8.2%	2	0.7%	24	8.8%	4.0%

Source: THECB -- Accountability System - Community Colleges - Success - Galveston College

## 60x30 Accountability Measure

**Working or Enrolled in Texas within 1-Year of Graduation**

Students found working or enrolled in Texas within one year after earning a degree or certificate.

**Note that this measure was revised to match the 60x30 state strategic plan.**

			FY2014		FY2015		FY2016		Point Change FY2014 to FY2016
			<b>376</b>		<b>397</b>		<b>425</b>		
Working Only	<i>refer to old THECB</i>	<i>refer to old THECB</i>	177	47.1%	246	62.0%	240	56.5%	9.4%
Working & Enrolled	<i>Accountability System data</i>	<i>Accountability System data</i>	92	24.5%	101	25.4%	116	27.3%	2.8%
Enrolled Only			50	13.3%	35	8.8%	28	6.6%	-6.7%
Not Found			57	15.2%	15	3.8%	41	9.6%	-5.5%

Source: FY2014 to FY2017 from new THECB 60x30 Accountability System - 2018 Community College Report





51.0905	NMT		7	3	8	8	33	32	29	32	100%	100%	100%	100%	100%	100%
		AAS														
51.0907	RADT		11	9	10	6	51	49	48	44	87.5%	87.5%	100%	91.7%	100%	80.0%
		AAS														
		ATC														
51.0911	RADI		112	104	82	104	435	442	454	477	73.7%	94.2%	87.5%	94.9%	100%	96.0%
	<i>Radiog</i>	AAS		20	22	17				82	50%	95.5%	68.8%	100%	100%	95.5%
	<i>MRI</i>	ATC		31	8	65				210	100%	93.3%	100%	100%	100%	93.8%
	<i>CT</i>	ATC		53	52	22				114	100%	93.9%	96.2%	100%	100%	96.8%
51.16	RNSG	AAS	54	49	46	51	241	248	244	253	95.9%	79.5%	92.0%	88.2%	98.0%	95.5%
51.1613	VNSG	Cert2	29	19	30	19	119	114	121	121	83.3%	88.0%	60.0%	96.2%	85.0%	100%
48.0508	WELD		36	51	22	48	199	250	226	213				96.8%	92.0%	75.0%
		AAS														
		Cert1														
		Cert1														

### Institutional Goals:

Graduates: Each program must generate 5 graduates per year and/or 25 graduates over five years.

Licensure Pass Rate: 90% of program graduates who sit for the licensure or certification exam must pass within six months of graduation. Alternatively, the 3-year average must be within 5 percentage points of the standard designated by the relative licensure/certification entity. Note: The numerator is the number of students who passed the exam within six months of graduation; the denominator is the number of students who sat for the exam, not the number of annual graduates.

Placement Rate: 85% of program graduates must be employed or enrolled in a program to continue their education, or both, within one year of graduation.

Note: Programs not requiring licensure or certification are shown in shaded areas.

*Revised 06/2018*

# SACS Core Requirement 8.1

Galveston College

IE and Research IE and Research

## Texas Higher Education Coordinating Board

### Program Placement Rates - TECHNICAL PROGRAMS ONLY

**STANDARD:**

85% of workforce education program completers (3-year average) are employed or pursuing additional education within one year of graduation

CIP Code	Program Area	AY 2011-2012			AY 2012-2013			AY 2013-2014			AY 2014-2015			AY 2015-2016			3-Year Average		
		CMP	PLC	%	CMP	PLC	%	CMP	PLC	%	CMP	PLC	%	CMP	PLC	%	CMP	PLC	%
11.02	Computer Programming	2	2	100.0%															N/A
12.0401	Cosmetology							4	2	50.0%	7	6	85.7%	18	16	88.9%	29	24	82.8%
12.0503	Culinary Arts	3	3	100.0%	17	14	82.4%	15	11	73.3%	12	11	91.7%	4	3	75.0%	31	25	80.6%
15.0612	Industrial / Production Tech.	11	10	90.9%	4	4	100.0%	1	0	0.0%	1	1	100.0%				2	1	50.0%
43.0107	Law Enforcement (Police Academy)	21	19	90.5%	25	25	100.0%	17	17	100.0%	17	17	100.0%	19	19	100.0%	53	53	100.0%
46.0301	Electrical / Electronics							7	5	71.4%	10	9	90.0%	13	12	92.3%	30	26	86.7%
47.0201	HVAC	9	9	100.0%	19	18	94.7%	18	16	88.9%	9	9	100.0%	15	12	80.0%	42	37	88.1%
48.0508	Welding	40	33	82.5%	39	37	94.9%	31	30	96.8%	25	23	92.0%	24	18	75.0%	80	71	88.8%
51.0716	Medical Administration	6	6	100.0%	12	11	91.7%	17	14	82.4%	15	15	100.0%	18	17	94.4%	50	46	92.0%
51.0904	Emergency Medical Services	10	10	100.0%	13	12	92.3%	5	5	100.0%	3	3	100.0%	2	2	100.0%	10	10	100.0%
51.0905	Nuclear Medicine Technology	5	3	60.0%	6	5	83.3%	6	6	100.0%	3	3	100.0%	8	8	100.0%	17	17	100.0%
51.0907	Radiation Therapy	10	9	90.0%	8	6	75.0%	12	11	91.7%	8	8	100.0%	10	8	80.0%	30	27	90.0%
51.0909	Surgical Technology																		N/A
51.0911	Radiography, CT, and MRI	79	75	94.9%	99	97	98.0%	78	74	94.9%	103	103	100.0%	101	97	96.0%	282	274	97.2%
51.3801	Nurse, Registered	41	38	92.7%	45	41	91.1%	51	45	88.2%	49	48	98.0%	44	42	95.5%	144	135	93.8%
51.3901	Nurse, LVN	19	18	94.7%	21	21	100.0%	26	25	96.2%	20	17	85.0%	26	26	100.0%	72	68	94.4%

Source: THECB CB116 Supplemental Follow-Up and Automated Student and Adult Learner Follow-Up System (ASALFS)  
(data as reported to the THECB in CB116 Follow-Up)

CMP = Completer/graduate  
PLC = placement

figures exclude duplicates (students counted only once per academic year and only one CIP code -- no counts for multiple CIP codes)

# SACS Core Requirement 8.1

## Galveston College Licensure Pass Rates

### Results by Program

CIP Code/Program	2013 (FY 12-13)			2014 (FY 13-14)			2015 (FY 14-15)			2016 (FY 15-16)			2017 (FY 16-17)		
	Test	Pass	%	Test	Pass	%	Test	Pass	%	Test	Pass	%	Test	Pass	%
12.0401 Cosmetology							7	7	100.0%	13	13	100.0%	18	17	94.4%
43.0107 Law Enf., Peace Officer	25	25	100.0%	19	16	84.2%	17	17	100.0%	19	19	100.0%	13	13	100.0%
<b>51.0904 EMERGENCY MEDICAL SERVICES (EMS)</b>															
• EMS - Basic	9	4	44.4%	9	7	77.8%	8	1	12.5%	16	8	50.0%			N/A
• EMS - Advanced AEMT (formerly Intermediate)	0	0	0.0%	1	1	100.0%	3	2	66.7%			N/A	5	3	60.0%
• EMS - Paramedic	3	3	0.0%	7	4	57.1%	5	2	40.0%	1	1	100.0%	5	4	80.0%
<b>TOTAL EMS</b>	<b>12</b>	<b>7</b>	<b>58.3%</b>	<b>17</b>	<b>12</b>	<b>70.6%</b>	<b>16</b>	<b>5</b>	<b>31.3%</b>	<b>17</b>	<b>9</b>	<b>52.9%</b>	<b>10</b>	<b>7</b>	<b>70.0%</b>
51.0905 Nuclear Med. Tech.	7	4	57.1%	6	6	100.0%	3	3	100.0%	15	15	100.0%	16	16	100.0%
51.0907 Radiation Therapy	7	7	100.0%	11	11	100.0%	8	7	87.5%	8	7	87.5%	6	6	100.0%
<b>51.0911 RADIOGRAPHY</b>															
• Radiography	11	11	100.0%	14	14	100.0%	20	10	50.0%	22	21	95.5%	16	11	68.8%
• Computerized Tomography	38	38	100.0%	38	37	97.4%	6	6	100.0%	49	46	93.9%	26	25	96.2%
• Magnetic Resonance Imaging	16	15	93.8%	19	18	94.7%	12	12	100.0%	15	14	93.3%	6	6	100.0%
<b>TOTAL RADIOGRAPHY</b>	<b>65</b>	<b>64</b>	<b>98.5%</b>	<b>71</b>	<b>69</b>	<b>97.2%</b>	<b>38</b>	<b>28</b>	<b>73.7%</b>	<b>86</b>	<b>81</b>	<b>94.2%</b>	<b>48</b>	<b>42</b>	<b>87.5%</b>
51.3801 Nurse, Registered	49	38	77.6%	47	41	87.2%	49	47	95.9%	44	35	79.5%	50	46	92.0%
51.3901 Nurse, LVN	18	16	88.9%	23	22	95.7%	18	15	83.3%	25	22	88.0%	20	12	60.0%
<b>TOTAL</b>	<b>183</b>	<b>161</b>	<b>88.0%</b>	<b>194</b>	<b>177</b>	<b>91.2%</b>	<b>156</b>	<b>129</b>	<b>82.7%</b>	<b>227</b>	<b>201</b>	<b>88.5%</b>	<b>181</b>	<b>159</b>	<b>87.8%</b>

**Source:**

THECB Licensure data collection -- certified figures  
(data from accreditation agencies & student self-report)

**NOTE:**

FY 2013 to 2015 -- figures exclude duplicates within same CIP code

FY 2016 and FY 2017 -- figures include duplicates within same CIP code

revised 06/07/2018

***Table-4***  
**Graduates and Degrees and Certificates Awarded**

<b>Graduation Year</b>	<b>2012</b>	<b>2013</b>	<b>2014</b>	<b>2015</b>	<b>2016</b>	<b>2017</b>	<b>2018</b>
Graduates (Unduplicated)	407	455	424	410	430	488	534
Degrees & Certificates Awarded	470	543	478	475	516	569	635

*Revised 10/2018*

## SACS Federal Requirement 8.1

### Enrollment Trends:

#### Fall Headcount Enrollment

<b>Student Status</b>	<b>2013</b>	<b>2014</b>	<b>2015</b>	<b>2016</b>	<b>2017</b>	<b>2018</b>
<b>Full-time</b>	577	539	504	565	584	710
<b>Part-time</b>	1,554	1,509	1,567	1,635	1,613	1,713
<b>Total</b>	<b>2,131</b>	<b>2,048</b>	<b>2,071</b>	<b>2,200</b>	<b>2,197</b>	<b>2,423</b>
<b>% P-T</b>	72.9%	73.7%	75.7%	74.3%	73.4%	70.7%

*Revised 10/2018*